

Specification

SONAR

Name	Model	PROEYE751-SNR-7-MEGA	PROEYE751-SNR-MEGA-PLUS
Sonar Monitor	Size / Resolution	7" TFT / 800H×480V	9" TFT / 800H×480V
Sonar Frequency	Side / Down Image	1050-1175kHz(75°) 405-505kHz(75°)	1050-1175kHz(86°) 780-840kHz(86°) 405-505kHz(86°)
	2D Sonar Image	150-220kHz(25° - 42°)	150-220kHz(25° - 42°)
Search Coverage	Side / Down Imaging	MEGA : SIDE 38m / DOWN 23m 4 5 5 : SIDE 73m / DOWN 38m	MEGA : SIDE 61m / DOWN 61m 800kHz : SIDE 38m / DOWN 38m 455kHz : SIDE 122m / DOWN 122m
	2D SONAR	200kHz 305m	
Bluetooth	2402-2480 MHz		
IPX Rating	IPX7 Waterproof Rating		

CAMERA

Name	Model	PROEYE751-SNR-7/MEGA
Color Image Sensor (Camera)	Pick-up Element	1/4" Color Interline Transfer CCD Image Sensor
	Total Number of Pixels	NTSC / PAL : 648 (H) × 488 (V)
	Video Output	1 Vp-p 75 Ω (Unbalanced)
	Resolution	480 TV Line
	Minimum Illumination	0.3 Lux F2.0 (G3.8)
	White Balance	ATW(2500K – 9000K)
	Lens	Angular View 51(H)deg*40(V) degrees
Illumination	Viewing distance;	15cm to 6 m in total darkness
	Bulb	LED Bulb, 12 p.c.s
	Minimum Life	1000 Hours
Articulation	Power	3.6V
	Actuator	DC 12V Geared Motor
Total Viewing Area of Camera	Total Articulation Angle	180 degrees
		231 degrees
Cable	Style	Straight Cable
	Length	10m
	Connector	12 Pin / Water proof : Underwater 50m
Housing	Water proof	Underwater 50m
	Dimension	Camera Head Housing : 35 (H) × 36 (V) mm



CORPORATION

HEAD OFFICE 23, NISHINAKA-AI-CHO, NISHINOKYO
NAKAGYO-KU, KYOTO 604-8441 JAPAN
TEL KYOTO +81 75 821 1185
FAX KYOTO +81 75 801 2263

TOKYO BRANCH 1-14-7 KIKUKAWA, SUMIDA-KU
TOKYO 130-0024 JAPAN
TEL TOKYO +81 3 3634 6611
FAX TOKYO +81 3 3632 0246

URL: <http://www.yone-co.co.jp>

2019.6.E



Multi-Purpose Search & Rescue Camera

PROEYE 751-SNR

PAT. A

SONAR Plus™



**Search out by SONAR and
Pinpoint with the Underwater Camera Head!
Great result in dark and cloudy waters!**



With the unique PROEYE 751-SNR SONAR Plus, operators can see sonar images from the SONAR System and real-life images captured by the Underwater Camera Head at the same time.

The forefront technologies built into SONAR provide clear images even when searching the dark or cloudy waters of lakes and rivers. The system is designed compactly for optional use for various types of search & rescue operations.



PROEYE 751-SNR
SONAR Plus

NEW MEGA SERIES LAUNCHED

**9" WIDE MONITOR
INSTALLED W/1.2 MHz
MEGA PLUS SONAR!**

Please visit our web-site, www.yone-co.co.jp

YONE CORPORATION



PROEYE 751-SNR

SONAR Plus™

*SONAR: Sound navigation ranging

751-SNR Series **MEGA PLUS** model

Launched!

9" Wide Monitor Installed W/ 1.2 MHz MEGA System. More Sharpe Sonar Image!

Outline

Search out by SONAR and Pinpoint by Underwater Camera Head !

- With help from the Side Imaging and Down Imaging technologies of this SONAR system, you will be able to rapidly locate and visualize targets like sunken boats, vehicles and accident victims from the side of your boat. Conventional sonars usually take considerable time, even hours to locate targets. With the Side Imaging system incorporated in 751-SNR

SONAR system, you might be able to find your target in minutes.



- Once you find the target, lower the Underwater Camera Head directly from the sensor unit to pinpoint and confirm the location.

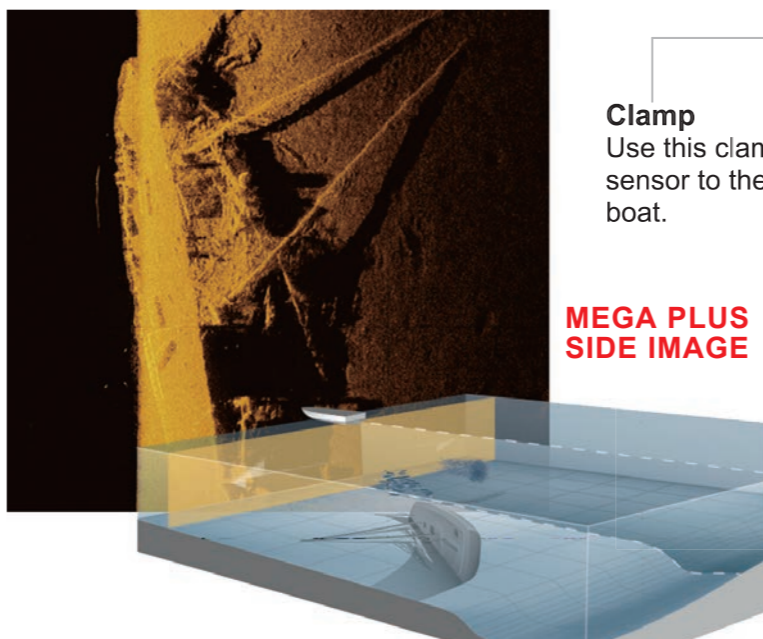
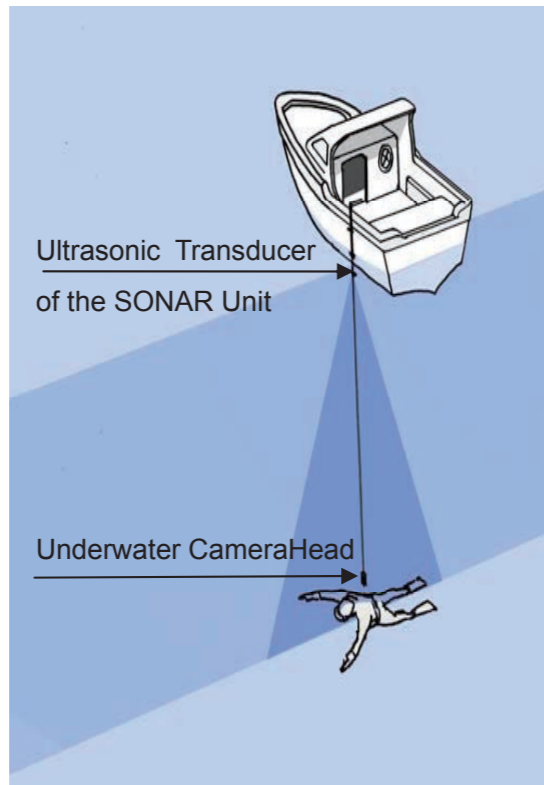


- The GPS installed in the system displays the exact location of the point.



- Images can be recorded onto the SD card.

SD Card Slot



SONAR Image Display
7" or 9" Monitor for a clear display of the SONAR image. (*Example Picture)

Underwater Camera Display
The 7" LCD Monitor displays the captured image from the Underwater Camera Head. (*Example Picture)

GPS Antenna

Underwater Camera Control panel
Remotely control the illumination and the 180 degree articulation.



System Box

Sensor Unit

Clamp
Use this clamp to fix the sensor to the side of the boat.

Ultrasonic Transducer
The SONAR system sends its sound wave signals from this transducer.

Camera Head Cable
10m straight cable length
If needed, 20m, 30m and 50m
Extension Cables can be connected with the waterproof connector.

Underwater Camera Head
Designed for underwater use at depths up to 50m with 180 degree remote control articulation.

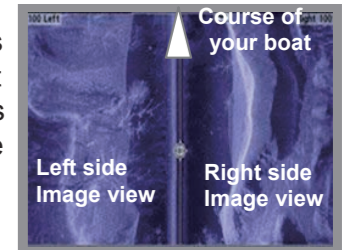
Illumination
The LED 12 bulb provides powerful illumination.

Search Operation

- Step.1 Searching with the SONAR's Side Image viewing**

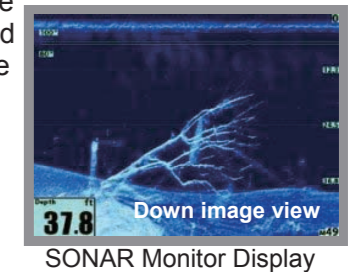
The Side Image viewing sonar casts two slim beam, one on each side of the boat, and a larger 180° beam underneath. The sonar range covers a distance of up to 38m on each side of your vessel. This gives you a 76m range of view from your location.

Clearly visualize the objects in the water and pinpoint their whereabouts in relations to your boat including the most object, your target.



- Step.2 Locating with the SONAR's Down Image viewing**

To better see target, move the boat above the target and look down in the Down Image viewing mode.



- Step.3 Pinpointing with the Underwater CameraHead**

Lower the Underwater CameraHead to capture an actual image of the target on the Underwater Camera Monitor Display.

- Step.4 Recording the position with Marine GPS**

Check and record the latitude and longitude of the location indicated on the display.

